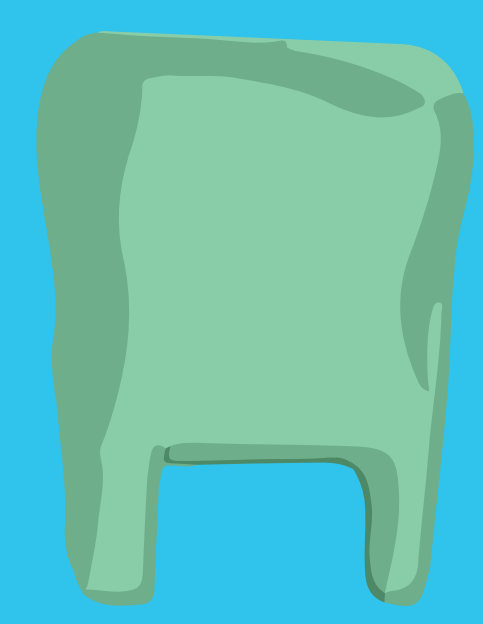




Use cloth bags and other reusable options



100-500 years to decompose
SINGLE USE PLASTICS

Can lead to loss of precious aquatic life. Avoid the use of straws



200 years to decompose
PLASTIC STRAW

5 min of Use and takes forever to decompose
Reduce & use the right bin!



500 years to decompose
STYROFOAM CUTLERY

Doesn't decompose
GLASS



Drop in right bin to make sure it gets recycled!

80-200 years to decompose
ALUMINIUM CAN



Can be recycled unlimited times, make sure to segregate at source!

5 years to decompose
TETRAPAK



5 min to drink from it 5 years to get rid of it. Segregate today!

450 years to decompose
SURGICAL MASK



Switch to reusable cloth masks

100 - 500 years to decompose
MULTI-LAYER PLASTICS



Cannot be recycled but can be used for coprocessing